

# General Information about Warsaw/Modlin Airport (WMI)



October 2024

# Welcome to Warsaw!



Warsaw Poland selected the European Best Destination 2023!

It took the 1st position in the Competition with 21 European cities winning 142,081 votes!

Warsaw was also recognized and awarded by the organizer in four additional categories:

- Best Cultural Destination (capital of culture)
- Best Destination for Food Lovers (capital of good taste)
- Safest Destinations in Europe (capital of safety)
- Best Destination for a city break



# Warsaw-Modlin Airport

## Getting to and from Warsaw

### BUS:

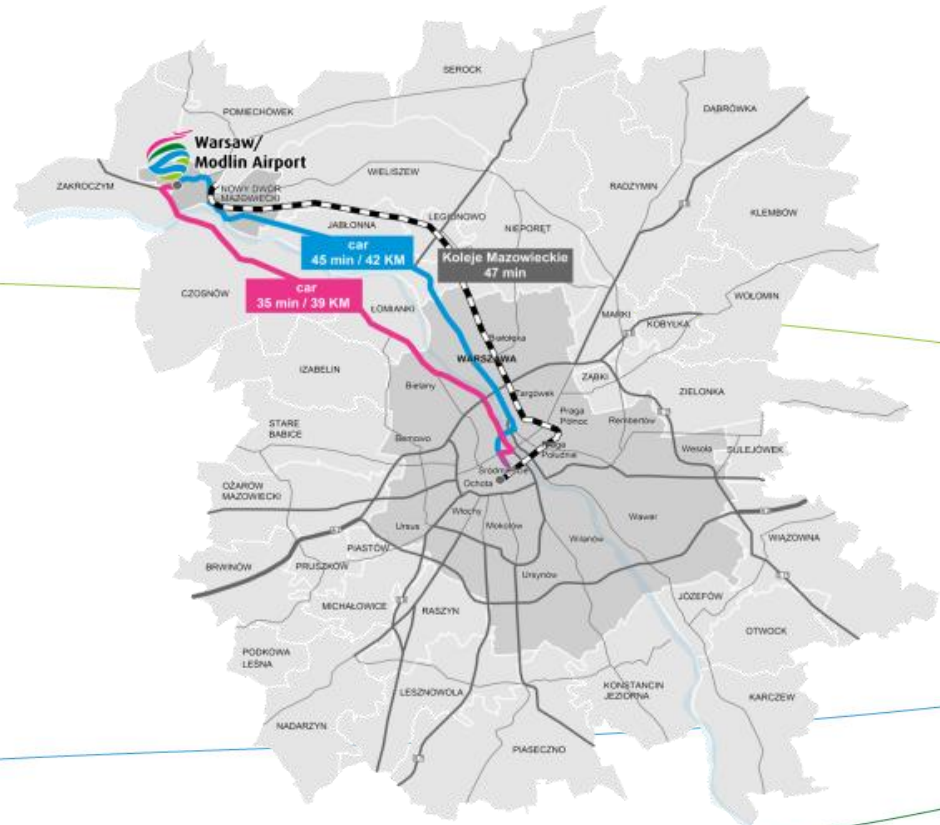
25 daily connections to Warsaw  
*Trip duration: 40-45 minutes*

### TRAIN:

19 daily connections  
to Warsaw Central Station  
*Trip duration: 60 minutes*

38 daily connections  
to Warsaw Gdańska Station  
*Trip duration: 65 minutes*

Shuttle bus: every 20-25 minutes



# Warsaw-Modlin Airport

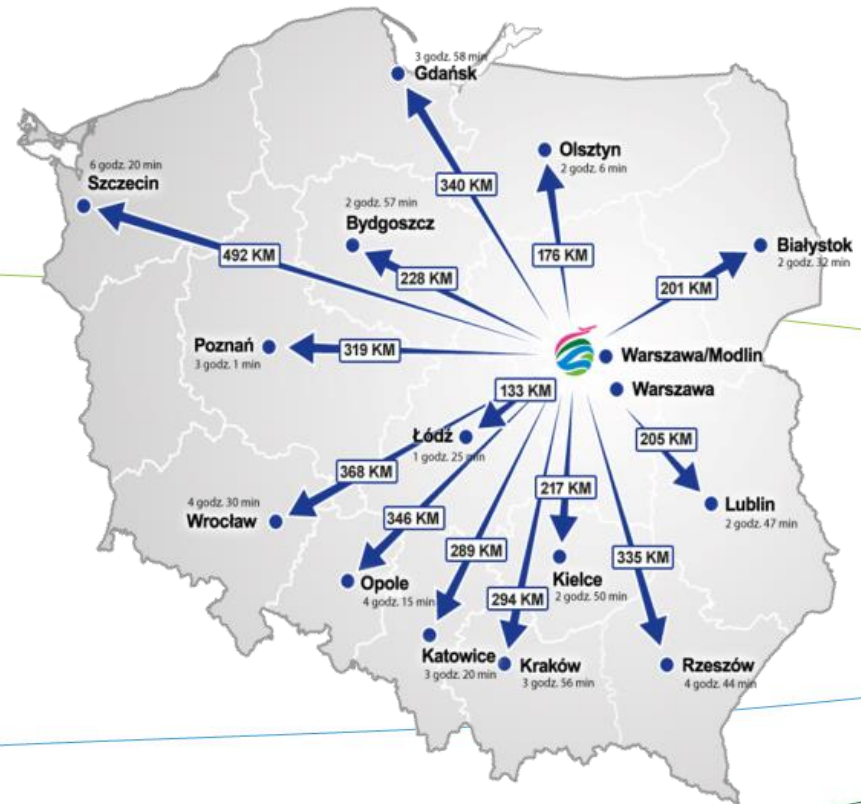
## Getting to and from other cities



Gdańsk (300 km) ⇒ 3h 15 min.  
Poznań (320 km) ⇒ 3h 30 min.  
Kraków (330 km) ⇒ 4h 15 min.  
Wrocław (360 km) ⇒ 3h 50 min.  
Szczecin (570 km) ⇒ 5h 40 min.



Regional and Inter City trains  
stop at the Modlin Train Station  
Approx. 1 hour trip to all major  
cities in the Masovian district





# BUS CONNECTION

Warsaw-Modlin Airport has got **138** bus destinations operated by FlixBus, Contbus and other operators opening the wide net of connections around Poland and to the neighboring countries



**Poland: 92 destinations**

**Ukraine: 28 destinations**

**Germany: 12 destinations**

**The Czech Republic: 4 destinations**

**Belarus: 2 destinations**





# Catchment Area

1.7 mln Population of Warsaw

2.6 mln Warsaw agglomeration

2.5 mln less than 1h drive

5 mln less than 2h drive

9 mln less than 3h drive

7.5 mln North-Eastern and Eastern Poland



# COMPETITIVE ADVANTAGES

## Looking for an efficient gateway to Warsaw?

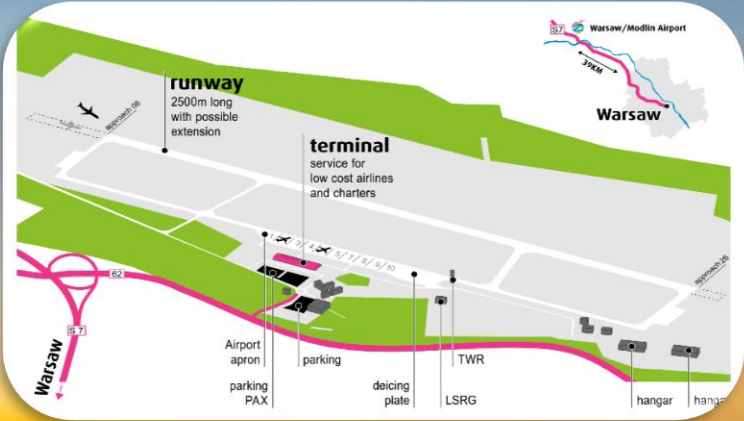
Warsaw-Modlin Airport offers significant advantages for both travelers and Airlines:

- **Prime Location:** situated near Warsaw, it provides convenient access to the city center (usually within an hour).
- **Cost-Effective:** Modlin boasts the lowest airport charges in the region, making it an attractive option for budget-conscious travelers and Airlines.
- **Operational Efficiency:** quick turnaround times (typically under 30 minutes) ensures smooth operations and minimize delays.
- **24/7 Operations:** Unlike Chopin Airport, Modlin has no night curfew, allowing for greater scheduling flexibility.
- **Non-Slot Restricted:** Free from slot restrictions, Modlin offers airlines more scheduling options.
- **Warsaw Chopin Connectivity:** easy connections to Warsaw Chopin Airport are available for those requiring broader network access.
- **Incentive Programs:** Explore potential incentives for airlines choosing Modlin.



Warsaw/Modlin Airport  
is ready to take over and handle the nighttime flights to Warsaw

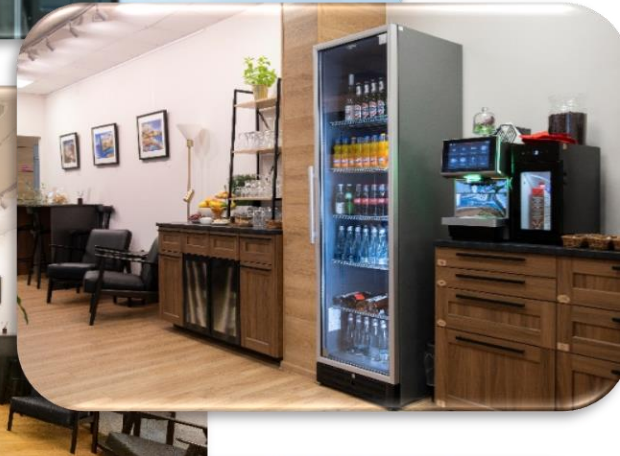
# INFRASTRUCTURE





# Airport services

- Automated Border Control Gates
- Restaurants & cafes
- Car rentals
- Cash machines
- Currency Exchange
- Car parking (600 places near the Terminal) –  
**New Service of booking a parking place online**
- New Business Lounge  
**Priority Pass Group Services provided**
- Extended Commercial Area
- Shops
- Duty Free shops



# Air traffic statistics at WMI in 2023

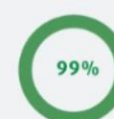


Year	2018	2019	2021	2022	2023
Total number of passengers	3 081 985	3 106 041	1 457 040	3 126 389	3 400 967
Total number of aircraft movements	20 209	21 050	14 501	22 383	22 154
Average number of destinations	49	60	56	57	59

**22 154**  
TAKE-OFFS AND LANDINGS



PASSENGER TRAFFIC  
COMPARED TO 2022



AIR OPERATIONS  
COMPARED TO 2022



PASSENGER TRAFFIC  
COMPARED TO 2019



AIR OPERATIONS  
COMPARED TO 2019

# TOP 10 destinations from/to WMI in 2024

- 1 STN
- 2 CIA
- 3 DUB
- 4 ALC
- 5 ARN
- 6 BGY
- 7 BCN
- 8 BVA
- 9 EDI
- 10 MLA



## Airport charges Tariff at Warsaw/Modlin Airport (effective from 16.10.23)

### Landing Charge

Maximum Take-off Mass of an aircraft (MTOM)	Charge rate (PLN)
over 20 to 40 tonnes	1 275
over 40 tonnes	31 for each commenced tonne of MTOM

Passenger Charge -37 PLN/PAX – with a discount system for scheduled flights

Security Charge - 3 PLN/PAX – fixed charge

PRM Charge - 1,3 PLN/PAX – fixed charge

Parking Charge - up to 2 hours free of charge, over 2 h  
PLN 14 tone/24 h

### Noise Charge

EPNdB	Charge rate (PLN) for each commenced tonne of MTOM
0.00 - 9.00	16



# Airport charges Tariff at Warsaw/Modlin Airport (effective from 16.10.23)

## The discount scheme form.

### New Scheduled Connection discount

### New Strategic Scheduled Connection

Discount period	Amount of discount in the landing charge		Amount of discount in the PAX charge	
	For AC with not more than 195 PAX seats on board	For AC with more than 195 PAX seats on board	For AC with not more than 195 PAX seats on board	For AC with more than 195 PAX seats on board
Year 1	75%	80%	55%	60%
Year 2	60%	65%	35%	40%
Year 3	45%	50%	20%	25%
Year 4	30%	35%	5%	10%

Discount period	Amount of discount in the landing charge		Amount of discount in the PAX charge	
	For AC with not more than 195 PAX seats on board	For AC with more than 195 PAX seats on board	For AC with not more than 195 PAX seats on board	For AC with more than 195 PAX seats on board
Year 1	85%	90%	65%	70%
Year 2	70%	75%	45%	50%
Year 3	55%	60%	35%	40%
Year 4	40%	45%	25%	30%

Discount on the PAX charge on scheduled connections.

Volume discount to the PAX charge PLN 37/PAX is applied according to the table below

Number of passengers departing from Warsaw/Modlin Airport subject to passenger charge per calendar year	Amount of discount (PLN)	Rate of passenger charge after discount (PLN)
for each additional departing passenger from an interval 5 001 to 250 000	9	28
for each additional departing passenger from an interval 250 001 - 500 000	14	23
for each additional departing passenger from an interval 500 001 - 1 000 000	19	18
for each additional departing passenger from an interval 1 000 001 - 1 500 000	23	14
for each additional departing passenger from an interval 1 500 001 - 2 000 000	27	10
for each additional departing passenger from an interval 2 000 001 - 2 500 000	29	8
for each additional departing passenger from an interval over 2 500 001	31	6

### “All cargo” flight discount

The validity period of discounts	Amount of discount on landing charge
until 30 December 2023	70%
31 December 2023 to 30 December 2024	60%
31 December 2024 to 30 December 2025	50%
31 December 2025 to 30 December 2026	40%

## Incentive scheme \*

Discounts applicable on a new Strategic Destination, 4-year incentive scheme.  
Assumptions.

Aircraft	MTOW	#of pax per flight (85% PAX load)	Operations per week	Landing operations per year
A320neo	75.5	153	3	156

	Discount on Landing Charges	Fee per year- Landing Charge	Discount on PAX charges	Fee per year PAX Charge
AC type	A320neo			
<b>No discount</b>		<b>85.181 €</b>		<b>206.027 €</b>
1st year	85%	12.777 €	65%	72.110 €
2nd year	70%	25.554 €	45%	113.315 €
3rd year	55%	38.331 €	35%	133.918 €
4th year	40%	51.108 €	25%	154.521 €

<b>Charges per PAX with NO incentives</b>	<b>55.51 PLN</b>	<b>12.95 EUR</b>
<b>Charges per PAX with the Strategic Destination incentive (1ST YEAR OF OPERATION)</b>	<b>19.17 PLN</b>	<b>4.47 EUR</b>

\* Sample only

\*\* Fee with discounts assuming yearly operations, 1 EUR = 4.2864 PLN as of September, 2024

# PLANS for DEVELOPMENT

- Train/Railway connection to the Terminal
- New high speed road construction to the Airport
- Opening of the new Terminal for non-Schengen flights with 4 gates
- Construction of 3 new Parking Places for AC
- New hangars for MRO





## Yours dedicated Airport Contacts

Tomasz Szymczak

Senior Vice President - Commercial

E-mail: [t.szymczak@modlinairport.pl](mailto:t.szymczak@modlinairport.pl)

WhatsApp, Telegram, Mobile : +48 665 710 086

Olena Reveha

Chief Network Development

E-mail: [o.reveha@modlinairport.pl](mailto:o.reveha@modlinairport.pl)

WhatsApp, Telegram, Mobile : +48 722 090 586